



FADE RESISTANT dye stain

Deep clean colour that enriches the natural beauty of timber. 506 (concentrate) and 508 (ready for use) are available in five primary colours and Evic's standard palette (inside).

All are compatible with standard or special veneers and virtually all timber species.

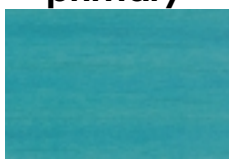
506

508

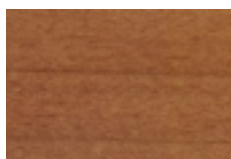
available as
concentrate (506)
 &
ready for use (508)

primary

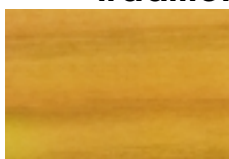
traditional stains



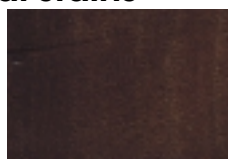
Blue DS1



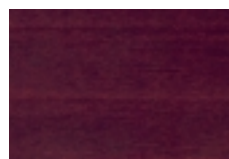
Golden Maple DS008



Baltic DS014



Jacobean DS019



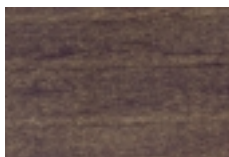
Deep Mahogany DS024



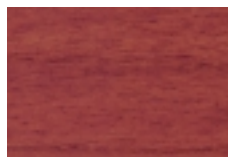
Red DS2



Maple DS009



Aged Baltic DS015



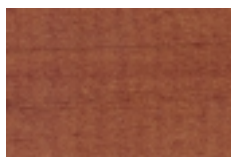
Jarrah DS020



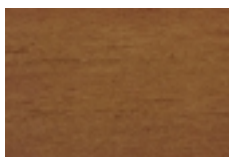
Rosewood DS025



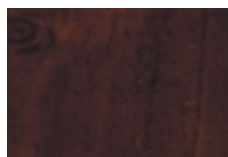
Yellow DS3



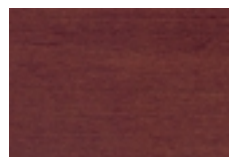
Light Oak DS011



Teak DS016



Cherrywood DS021



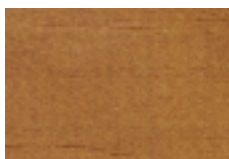
Australian Cedar DS026



Green DS4



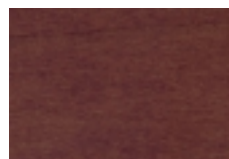
Golden Oak DS012



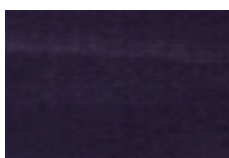
Nordic Teak DS017



Pecan DS022



Blackbean DS027



Black DSB



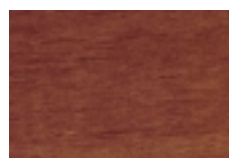
Redwood DS013



Walnut DS018



Mahogany DS023



Cedar DS028



new!



Lime DS031



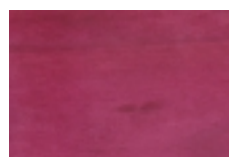
Cherry DS034



Grape DS032



Nectarine DS035



Plum DS033



Mandarin DS036

stains have been represented above on white pine



- Super fast dry time
- Dye selection offers superb colour range
- Interior fade resistant formulas
- High concentration – economical spread rates
- Wipe or spray application



Ideal for interior timber application preceding overcoating with an Evic clear finish. Suitable for interior wall panelling, commercial timber fittings, furniture, kitchen cupboards, vanities and other fixtures. Ultra fast drying times - in wipe or spray application.



506 Concentrate - comes in five primary colours (see colour card): Blue, Red, Yellow, Green and Black; plus a range of pre-blended selected timber tones.



1 2 4
10 20 60



Spray applied and/or wipe (cloth)

508 Ready for Use - Comes in a range of pre-blended colours available (see colour card). Ready for Use offer consistent and reliable pre-prepared stain colours for continuous users.



520 precat lacquer
540 acid cat lacquer
850 clear polyurethane
2000 clear polyurethane



approximately 6-8 square metres per litre

Should be taken as a guide only. The effect of further thinning plus the differences in timber profile and porosity alters coverage rates.



506 Concentrate
thin 100-200%
with **506S** reducer

508 Ready for Use
thin 0-50%
with **506S** reducer

Stain colours made from intermixing 506 concentrates should be thinned (100-200% with 506S) before use.

NOTE: It is important to use 506S reducer when further thinning 506-508 stains as it helps maintain an even consistent colour intensity, especially when spraying stain on and leaving to dry without wiping.



2-5 minutes



30 minutes



506-508 Dye Stain is a high strength product and creates different effects and colour on different timber species. Allow for test patches on unseen pieces of the timber to ensure the desired final result.



Conventional Spray Guns

Anest Iwata W200 spray gun at 275 kpa (40 psi).
Star Pro-Series SP770 at 310 kpa (45 psi).

Vacuum Diaphragm

Workquip vacuum diaphragm with a Star S770 pressure gun

Pressure Pot

55 kpa (8 psi) pot pressure using a Star S770 pressure gun at 240-275 kpa (35-40 psi).



To swell out dents or bruises, lay a cloth soaked in warm to hot water over the damaged area, this reduces the hollow. Alternatively place a wet cloth over the hollowed area and apply a hot iron to the cloth. Allow suitable drying (approx 12 to 24 hours) before proceeding with preparation.



Sand down timber with 180 open coat paper. Fill nail and screw holes with putty or Timbermate filler in a matching colour. Allow to dry. Finally, sand entire surface with 240 open coat paper then dust off.



-- FOR TIMBER AND VENNER --

SPRAY ON: Use a conventional spray gun with a 2.0mm needle. Spray one even double pass over the entire substrate and allow to dry for 30 minutes before sealing (more stain will darken the colour, less stain will lighten the colour).

SPRAY ON WIPE OFF: Apply a wet even coat by spray to the timber surface leave for approximately 1 minute on soft woods like pine or cedar, or up to 2 minutes for hardwood like Ash or Miranti. Lightly wipe off for an even deep penetrating stain. Allow to dry for 30 minutes before sealing.

WIPE ON WIPE OFF: For small articles this is a suitable method. Using a white lint free cloth, wipe the stain on as evenly as possible, allow to penetrate for approximately 1 minute then wipe to achieve a consistent uniform finish. Allow to dry 30 minutes before sealing.

Seal the dyed surface with Evic clear lacquer or polyurethane.

TONING: After sanding back the sealed surface toning can be used to obtain a darker or consistent timber colour. Add up to 10% 506-508 Dye Stain to Evic lacquer or polyurethane, thin as normal then apply a medium wet coat over the entire job or blend onto areas that need further darkening or toning. Allow to dry 30 minutes then finish with final lacquer or polyurethane coats.

STRESSING: Borrer Holes - Using a metal skewer lay black carbon paper on the surface then punch holes through the paper into the timber, randomly spaced and in clusters. On a standard door, 3 to 4 clusters and several areas with a few holes should give an authentic look.



Screw Marks - Cut the head off a 25 to 35 mm 6 to 10 gauge self-tapping or wood screw, lay over carbon paper, tap down with a hammer so as to leave the imprint of the screw in the timber surface. On a standard door 2 to 4 screw marks should be sufficient.

Key Marking - Take a heavy set of keys, place carbon paper on the surface, slap keys onto the paper. This will mark the timber with random surface imprints. On a standard door hit 4 to 5 times in random location - this should give a suitable effect.

Sand the stressed surface down with 240 open coat paper. Black carbon will stay in the deeper parts of stressed areas. Then carry out normal staining. Generally darker colours like Evic's Aged Baltic, Walnut or Deep Mahogany tends to work better in the bruised areas and give a more authentic stressed look.

-- APPLICATION ON MEDIUM-DENSITY FIBREBOARD (MDF)--

As 506/508 Dye Stains can extract waxes within MDF that can affect the cure when topcoating with 520 Precatalysed Lacquer, we recommend 510 Clear Sealer is used as a pre-sealing coat prior to application of 506/508 Dye Stain. 506/508 Dye Stain should then be used as a toning coat. Once the colour is achieved, allow to dry and finish with 520 Precatalysed Lacquer.

Top Coating: 540 Acid Catalysed Lacquer and 850/2000 Polyurethane Clears can normally be used over directly-applied 506/508 stain. Because wax problems can exist, we recommend testing the product on a hidden area of the job to ensure it is suitable.



Engineering Standards: Ensure that TLV standards are not exceeded. The product should be handled and used in a well ventilated area.

Personal Protection: Common sense dictates that precautions should be taken to avoid swallowing and/or skin contact with the product. Protection from splashing will be required while handling the product. Use safety glasses or face shield and impermeable gloves and overalls. If TLV standards are exceeded self contained breathing apparatus or a remote supply fresh air mask is required. Observe sensible personal hygiene standards, always wash before eating drinking or visiting the toilet.

Flammability: This product is a Class 3 Packing Group II flammable liquid with a flash point of 0 °C. Avoid all sources of ignition.



Storage And Transport: Store under cover in a cool place out of direct sunlight. This product is Class 3 PG II Dangerous Goods, Hazchem 3[Y] and must be stored, handled and transported accordingly.

Spills And Disposal: **Spills:** Immediately extinguish all sources of ignition. Keep people away. Ventilate the area or wear self contained breathing apparatus. Cleanup crew should wear eye and skin protection. Shut off source of spill. Contain and absorb with earth or sand. Avoid contaminating water supplies, waterways, sewers or drains. Shovel into marked, sealable containers for disposal. White Spirits or High Strength Cleaning Solvent I 800 S would be suitable for final cleanup.

Disposal: Refer more than trivial quantities to the State Waste Authority and advise the nature of the product. Alternatively consult Evic about disposal arrangements.

Fire Explosion Hazard: Products of combustion will include carbon dioxide & carbon monoxide. Thick smoke and dangerous fumes may be evolved. Fire-fighters should wear full protective clothing including self contained breathing apparatus. Fight fires with foam, CO₂ dry powder or water spray, depending on the circumstances. Do not contaminate waterways, water supplies, sewers or drains.



Up to 12 months if stored in properly sealed container with minimal air pad below 30°C



This is a specialised flammable, industrial coating and should only be applied by experienced and competent tradesmen in accordance with the manufacturers specification. **Please read Material Safety Data Sheet M503 and abide by all precautions suggested.**



Go to www.evic.com.au for product and material safety data on all Evic products. Information is also available in booklet and CD-ROM form, or by e-mail and fax transmission. For further enquiries, call the Evic Group on (freecall) 1800 761 761.

The information contained herein is intended to give a fair description of the product and its capabilities under specific test and field experience. It does not constitute an offer by the manufacturer, nor does the manufacturer warrant or guarantee its accuracy or completeness in describing the performance of suitability of the various products.